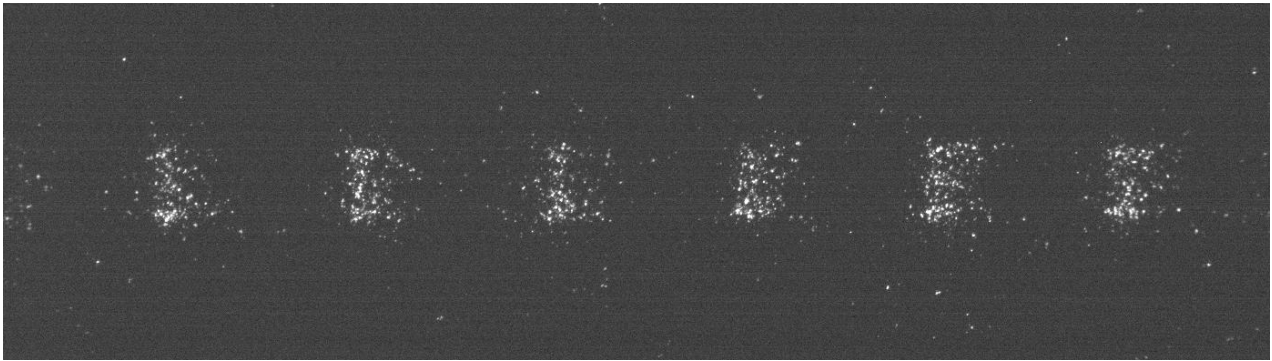


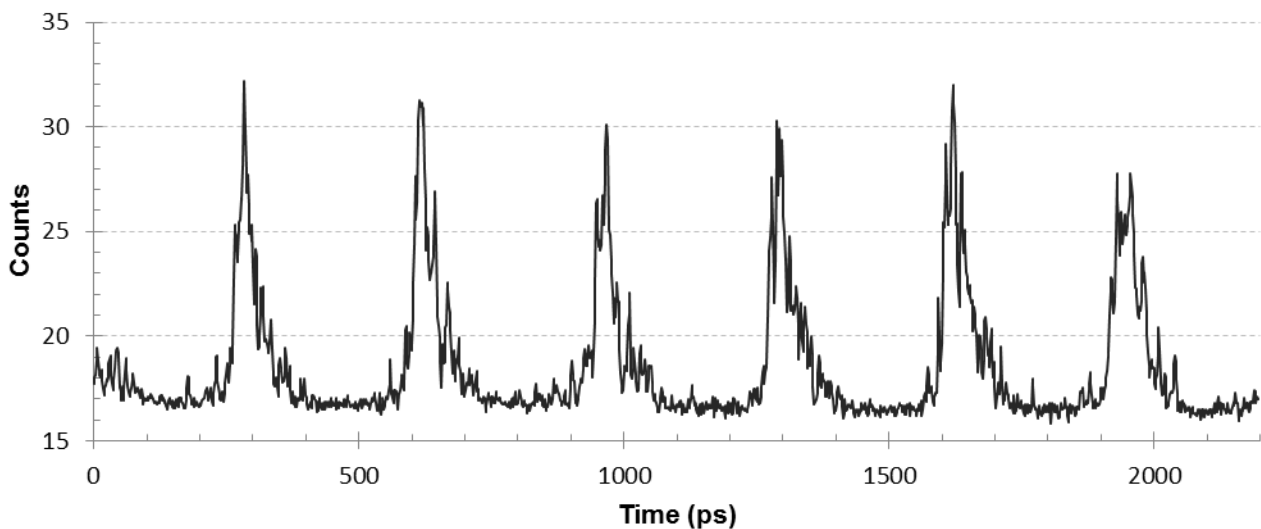
EG&G 3GHz Comb Generator Test

The comb generator has been tested with a SC-10 streak camera and a fast triggered sweep unit. The sweep speed has been set to 100ps/mm and the comb generator is triggered externally with a 5Hz signal. We also have set a low light intensity (thanks to the laser bias trimmer) for shorter pulse width.



Single Shot acquisition at 100ps/mm

Single Shot horizontal profile



Pulse	FWHM (Gaussian interpolation)
1 st	42 ps
2 nd	43 ps
3 rd	39 ps
4 th	51 ps
5 th	54 ps
6 th	60 ps
Average	48 ps