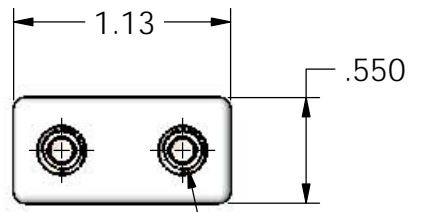
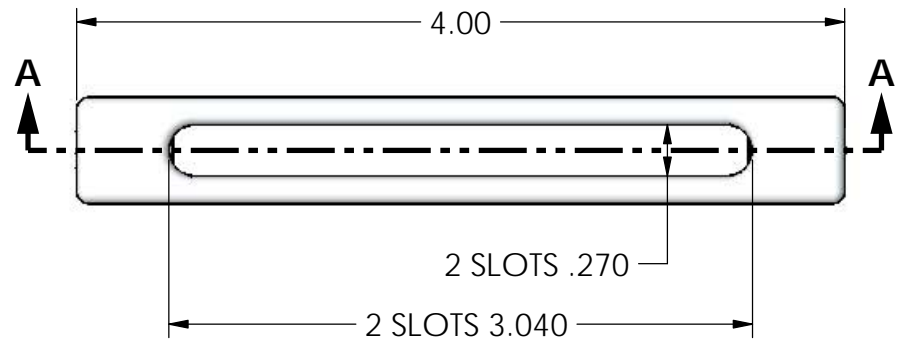
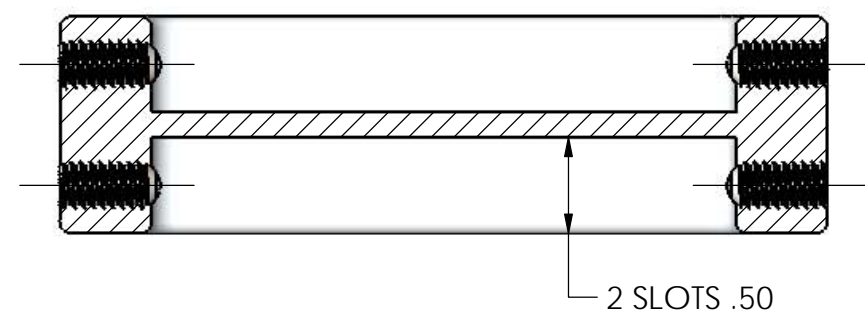


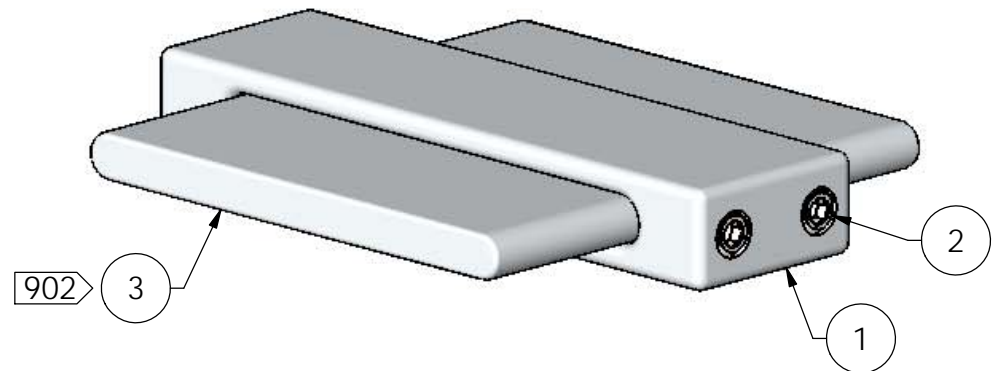
REVISIONS					
REV	ZONE	DESCRIPTION	CHANGED BY	APPROVED	MM/DD/YY



4X 1/4-20 BUSBAR CLAMP SCREWS  
TIGHTEN ON BUSBAR TO 50 LB-IN



SECTION A-A



NOT INCLUDED 902

ITEM	QTY	PART NUMBER	DESCRIPTION	MATERIAL
3	2	MCMASTER 9397T17	1/4 THICK X 3 WIDE BUSBAR	6101 ALUMINUM
2	4	MCMASTER 92311A537	CUP-POINT SET SCREW, 1/4-20 X .500 LG	18-8 STAINLESS STEEL
1	1	HG-5477	STRAIGHT BUSBAR COUPLER	

PARTS LIST / BILL OF MATERIALS

UNLESS OTHERWISE SPECIFIED, DIMENSIONS ARE IN INCHES. TOLERANCES ARE: .X = ± .030 .XX = ± .010 .XXX = ± .005 ANGULAR = ± 1° MACHINED FINISH = 63/		DESIGNED PEER HOFSTRA HG 12/22/18 DRAWN DANNY GALLANT GI 12/22/18 CHECKED PEER HOFSTRA HG 12/22/18 APPROVED PEER HOFSTRA HG 12/22/18		INITIAL RELEASE APPROVALS MM/DD/YY	
		PROJECT: <b>Hofstra Group, Ltd. Co.</b> BUSBAR STRAIGHT BUSBAR COUPLER ASSEMBLY			
NONE NEXT ASSEMBLY		DRAWING NUMBER <b>HG-5476</b>		REV <b>A</b>	
SIZE B		SCALE: NONE DO NOT SCALE DRAWING		SHEET 1 OF 1	

902 SUGGESTED BUSBAR.  
NOT INCLUDED WITH COUPLER.  
USER CUTS TO LENGTH.

900 FOR TECHNICAL QUESTIONS, CONTACT:  
PEER HOFSTRA, (505) 913-9916

NOTES (UNLESS OTHERWISE SPECIFIED)  
CALCULATED WEIGHT: .174 LB

WWW.HOFSTRAGROUP.COM